

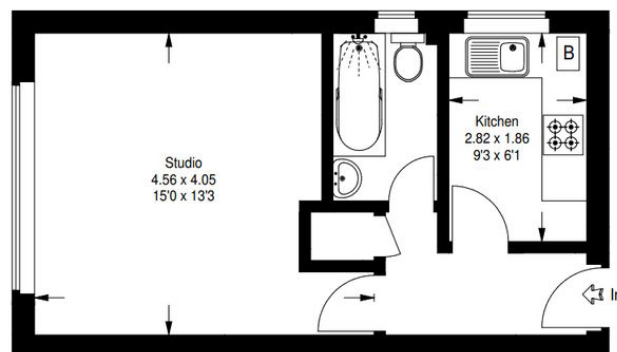
# Jerome Court, The Limes Avenue

London N11 1RF  
323.00 sqft  
30.01 sqm  
available from now on



The Limes Avenue, New Southgate, N11

Approximate Gross Internal Area :-  
30 sq m / 323 sq ft



+44 7557 858704

rent

total rent  
deposit

GBP 1,295  
GBP 1,494.23

apartment

pets  
furnished state  
built-in kitchen  
dishwasher  
washer dryer

not allowed  
unfurnished

building

construction year  
bike room

1990

parking

parking space rent  
parking space

GBP 50  
to rent

energy

energy efficiency rating C

distance, feet

closest  
underground  
station

Arnos Grove

