

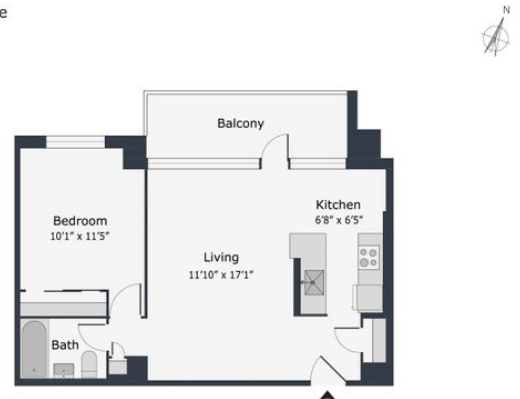
95 Jameson Avenue

Toronto, ON, M6K 2X1
floor 3 out of 10
bedrooms 1
bathrooms 1
513.60 sqft
47.71 sqm
available from 2025-01-07



95 Jameson Ave

Unit 408
1 Bedroom
514 sq ft



+1 647 927 0157

rent

total rent
includes heating, water

CAD 1,885

apartment

pets
furnished state
flooring
balcony
dishwasher
microwave
blinds

allowed
unfurnished
engineered wood

building

construction year
bike room
cable and internet
ready
onsite laundry

1966

parking

indoor parking

CAD 150



distance, meters

| | |
|------------------------|-------------------|
| closest subway station | Lansdowne Station |
| bus | 250 |
| streetcar | 250 |
| daily shop | 250 |
| shopping center | 500 |

