

9675 Av. Papineau

Montreal, QC, H2B 3C8

floor 1 out of 6

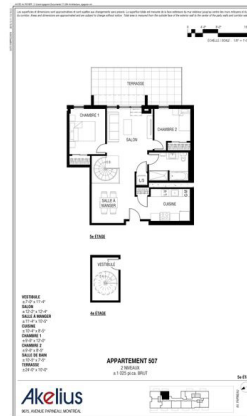
bedrooms 2

bathrooms 1

1025.00 sqft

95.22 sqm

available from 2025-04-01



+1 438 998 2873

rent

total rent

CAD 2,249

includes water

open house

2022-11-11

3 p.m. - 6 p.m.

apartment

pets

allowed

furnished state

unfurnished

flooring

laminat

balcony

dishwasher

washer dryer

air conditioning

building

construction year

2021

elevator

concierge

Canada Post parcel

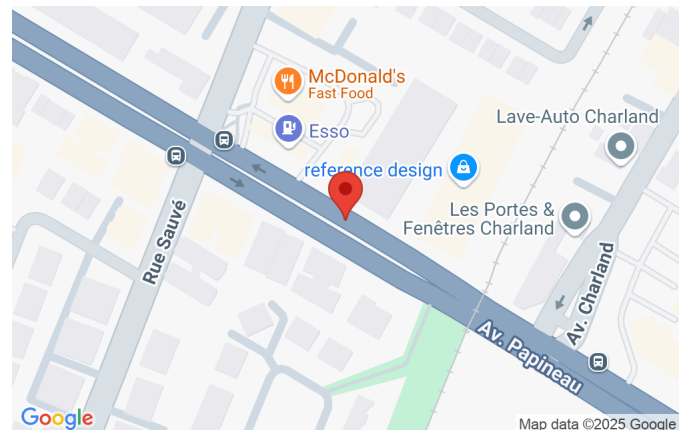
locker

bicycle racks

fitness centre

locker

CAD 25



parking

indoor parking

outdoor parking

CAD 160

CAD 105

distance, meters

closest subway
station

Sauvé





