

# 28 rue Hermel

## 75018 Paris



available from now on  
total rent EUR 900

### rent EUR

base rent	630
additional rent	245
operational costs	25
total rent	900
deposit	875

### apartment

apartment type	studio
rooms	1
bedrooms	0
size	19,45 m <sup>2</sup>
floor	2
heating type	electric heating

### building

construction year	1900
floors	7

### energy

energy efficiency rating	D
current energy consumption	211 kWh/ m <sup>2</sup> *a
gas efficiency rating	A
current gas consumption	4 kgeqCO <sub>2</sub> /m <sup>2</sup>

fully integrated kitchen



washer-dryer



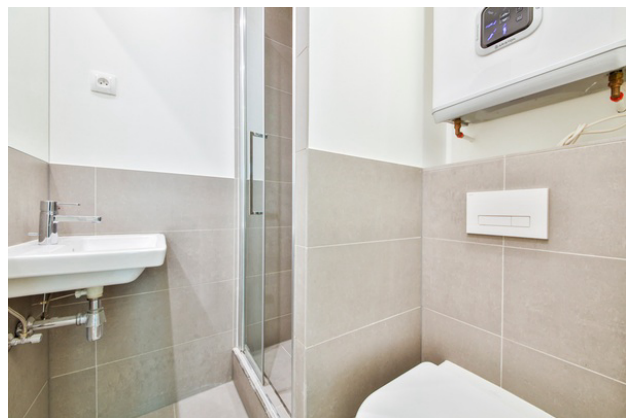
stove

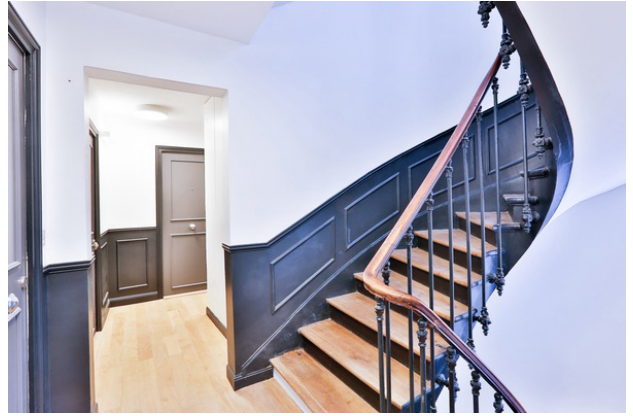
electrical ceramic

## distance m

closest subway station

Jules Joffrin







## comments

---

---

---