

Pagenfelder Platz 8

22111 Hamburg



available from now on
total rent EUR 1.019,94

rent EUR

base rent	859,94
operational costs	80
heating costs	80
total rent	1.019,94
deposit	2.579,82

apartment

rooms	2.5
size	58,42 m ²
floor	1
heating type	oil heating
fully integrated kitchen	✓
dishwasher	✓

building

construction year	1950
floors	4

energy

energy performance type	consumption
energy source	oil
energy efficiency rating	E
date of certificate	22.02.2018
valid until	22.02.2028
current energy consumption	145,7 kWh/ m ² *a

washing machine



distance m

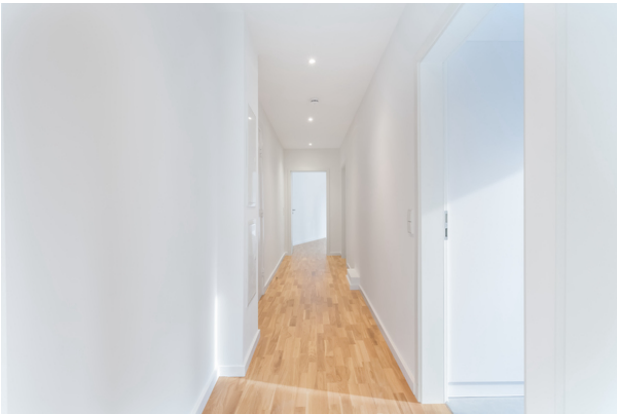
bus

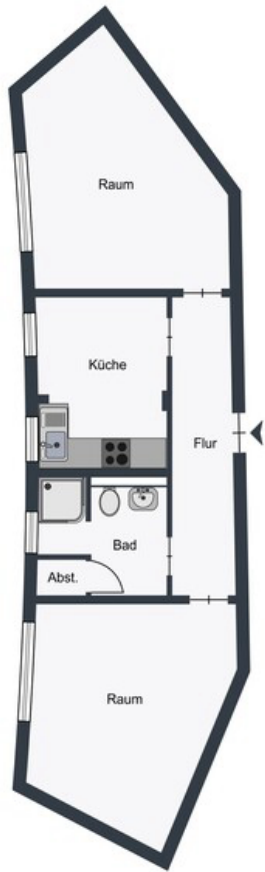
400

subway

400









comments
