

# Schulweg 27

## 20259 Hamburg



available from now on  
total rent EUR 1.061,98

### rent EUR

base rent	991,98
operational costs	70
total rent	1.061,98
deposit	2.975,94

### apartment

apartment type	ground floor
rooms	2
size	44,3 m <sup>2</sup>
heating type	gas floor heating
balcony	✓
fully integrated kitchen	✓
dishwasher	✓

### building

construction year	1958
floors	4

### energy

energy performance type	demand
energy source	gas
energy efficiency rating	C
date of certificate	15.06.2017
valid until	15.06.2027
current energy demand	88,8 kWh/m <sup>2</sup> *a

washer-dryer



## distance m

bus

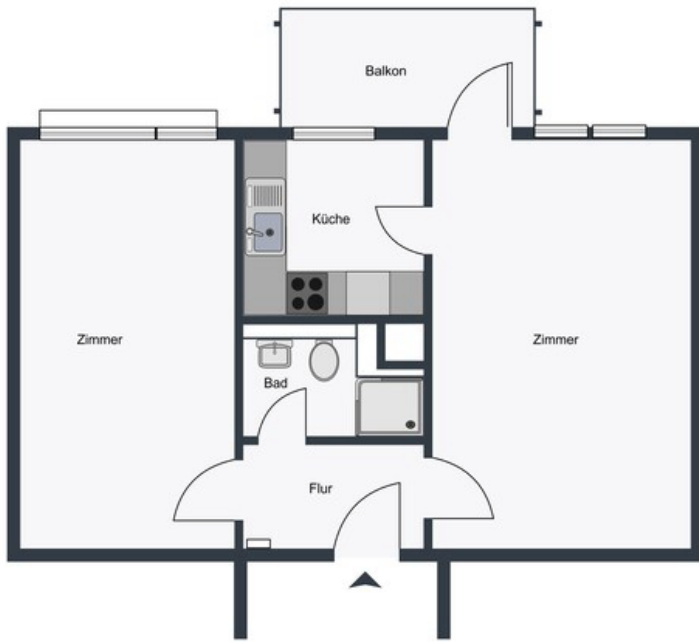
500

subway

500









## comments

---

---

---