

Bleicherstraße 26

22767 Hamburg



available from now on
total rent EUR 880

rent EUR

| | |
|-------------------|-------|
| base rent | 700 |
| operational costs | 110 |
| heating costs | 70 |
| total rent | 880 |
| deposit | 2.100 |

building

| | |
|-------------------|------|
| construction year | 1952 |
| floors | 5 |

apartment

| | |
|--------------------------|----------------------|
| rooms | 1 |
| size | 32,57 m ² |
| floor | 2 |
| heating type | district heating |
| balcony | ✓ |
| fully integrated kitchen | ✓ |

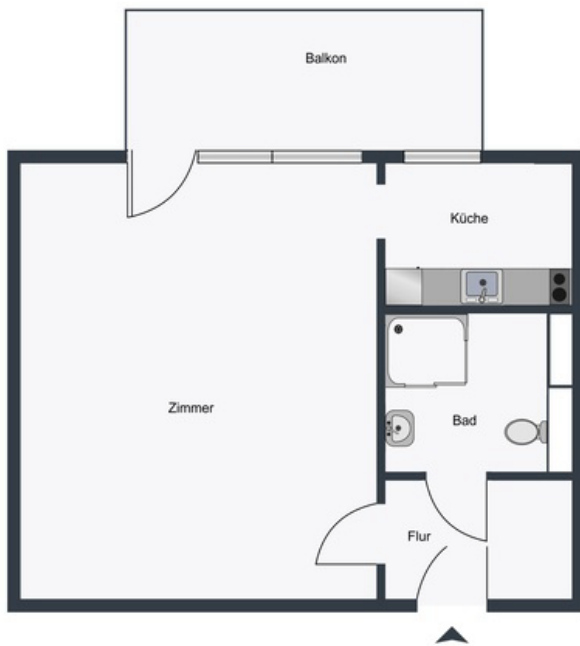
energy

| | |
|----------------------------|-----------------------------|
| energy performance type | consumption |
| energy source | district heating |
| energy efficiency rating | F |
| date of certificate | 05.04.2019 |
| valid until | 05.04.2029 |
| current energy consumption | 178,7 kWh/m ² *a |

distance m

| | |
|----------|-----|
| bus | 900 |
| subway | 900 |
| GO train | 800 |







comments
